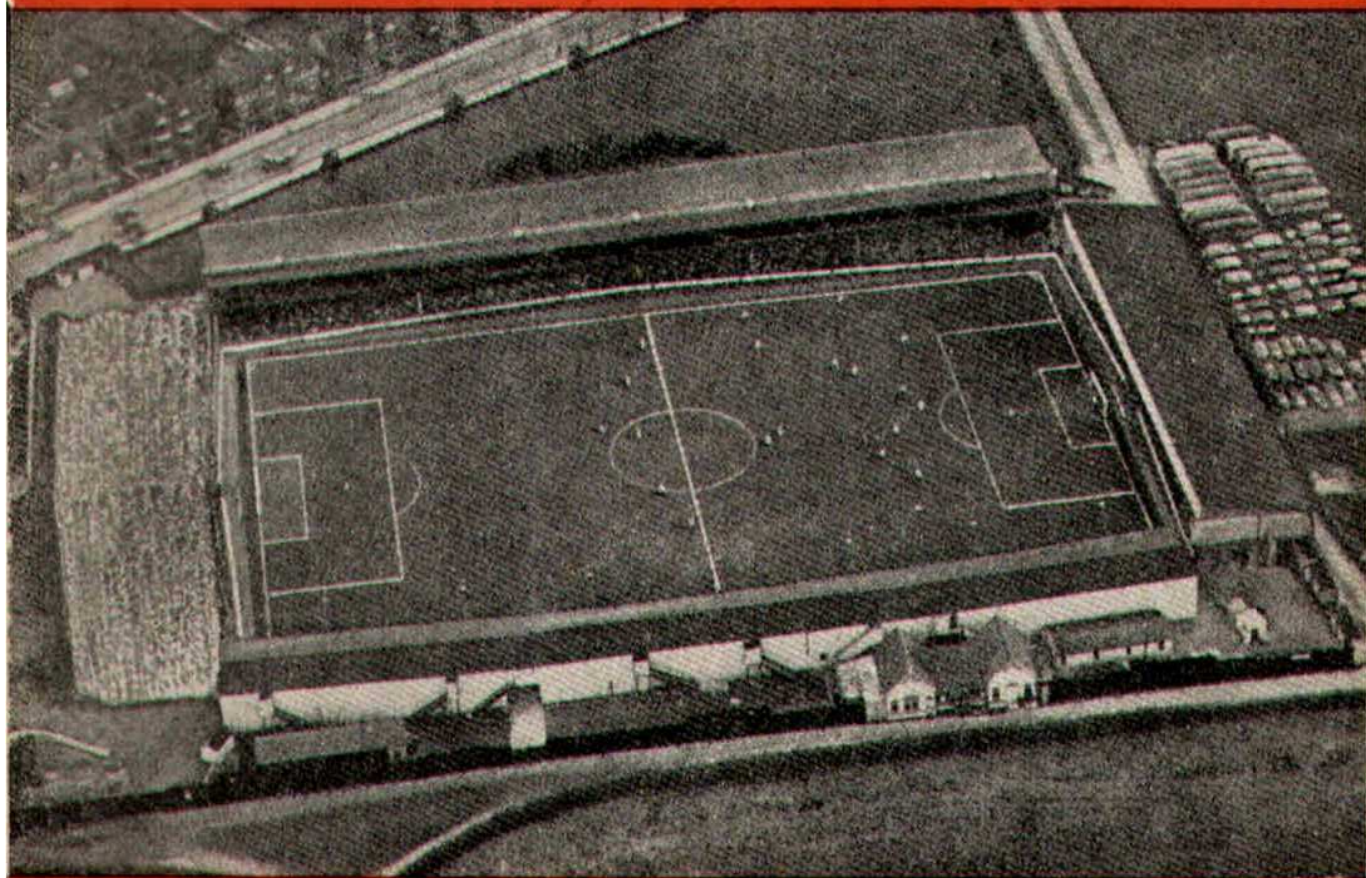




SWINDON TOWN FOOTBALL CLUB



SATURDAY, MARCH 10th, 1962

DIVISION III

SWINDON TN. v. BRISTOL C.

Kick-off 3 p.m.

Official Programme **4d.**

**SOUTHERN LAUNDRY
CO. LTD.**

Launderers and Dry Cleaners



TELEPHONE 4161

STATION RD., SWINDON

GO MODERN — GO ELECTRIC

for

TELEVISION, RADIO AND
DOMESTIC APPLIANCES

D. ROBSON

22 HAVELOCK STREET

6602

Swindon

6602

Make your Goal the

EAGLE HOTEL

(Prop.: Tom Hamilton)

WORTHINGTON :: GUINNESS

DEVENISH BEERS :: BASS

REGENT ST., SWINDON

LITTLE & CO. LTD.

The Name Linked with Service
and Value

*The Popular Ladies' and Men's
Complete Outfitters*



31-32 FLEET ST., SWINDON

Telephone 22831

NEXT MATCH . . .

WESSEX YOUTH LEAGUE

SWINDON TN. v. NEWPORT C.

TUESDAY NEXT, MARCH 13th

Kick-off 7.30 p.m.

Dr. BARNADO'S HOMES

Take care of 7,500 needy children and
still depend on public support

Send your donation to—

**Barnardo House, Stepney
Causeway, London, E.1.**

Donated by: Mrs. S. Mutch, 60
Cricklade Road, Swindon

LEESE, ING & Co. Ltd.

Incorporating BARKER & CO.

*Mineral Water and
Squash Manufacturers*



LANSDOWN RD., SWINDON

Telephone 22744/22320

HULFORD MOTORS Ltd.

SELF DRIVE HIRE

Fleet of 1962 Fords
Populares - Anglias - Consuls

SHRIVENHAM ROAD

(200 yards from Football Ground)

Phone 4934

LARGE CAR PARK AVAILABLE

For Quality
FLOWERS, FRUIT & VEGETABLES
Also FROZEN FOODS

**CLARKE'S
of Old Swindon**

Proprietors: A. G. G. & J. A. W. HUNT

64 DEVIZES ROAD - SWINDON

'Phone: 22337

ORDERS DELIVERED

SWINDON TOWN FOOTBALL COMPANY LIMITED

Registered Office: COUNTY GROUND, SWINDON

Directors:

Mr. W. J. CASTLE (Chairman)

Mr. H. E. LANE (Vice-Chairman)

Mr. B. T. HAMILTON (Hon. Treasurer)

Messrs. C. CHANDLER, J.P., J. DAVIES,

R. FRICKER, C. J. GREEN, F. PLYER, H. WILLIAMS and K. H. WILMER

Manager: B. J. HEAD.

Secretary: R. A. MORSE

VOL. 12

SATURDAY, MARCH 10th, 1962

No. 21

Club Notes

The draw at Reading continued the team's run of games without defeat. The point gained was deserved, and most useful, especially as we had to make three changes in the composition of the side.

The actual game itself from the football point of view was most disappointing. The ground was hard and dry, and the ball light, but there was a great deal of big kicking and hoping for the best. That could have been the plan, as Reading's goal came from a long ball down the middle of the field.

It was a real local "Derby" watched by over 14,000 spectators. There was plenty of atmosphere, a little football in the first half, a few thrills, and some near misses, but oh! we wish we could stop the kick-away of the ball after the whistle has blown. Results are important,

but supporters do not pay to see time deliberately wasted.

One special mention. Full marks to the referee, Mr. Tuck. He handled the game with firmness and tact. Many thought him the best official seen this season.

Now back to the programme published on Tuesday, 19th September, 1961. "The club is once again the centre of publicity which many think does harm to the team."

With more matches being played in the evenings, there are greater opportunities for managers to see more players. Obviously they visit the games for various reasons. Long term planning, tactics, etc. Then comes the follow up. Numberless clubs represented, outrageous sums being offered for certain players, and the next morning "Clubs in danger of closing down". If care is not taken the situation could become chaotic.

THE WALCOT CHEMIST

WIDE RANGE OF COSMETICS, PERFUMES,
BABY NEEDS AND PHOTOGRAPHIC GOODS

10 SUSSEX SQUARE - WALCOT
TEL. 6680

M. J. REYNOLDS

Grocer

152/154 CRICKLADE ROAD
5479 SWINDON 5479

COOKED HAM OUR SPECIALITY

WATSON'S CENTRAL NEWSAGENCY

LTD.

Swindon's Leading Wholesaler

1 WELLINGTON STREET, SWINDON
Tel. 22049

L. WOLLEN

OFF LICENCE

WINES & SPIRITS

Arkell's Ales and Stout

373 Cricklade Rd., Swindon

Deliveries Daily

Phone 3508

CLUB NOTES—continued

Naturally scouts look at young players, but it has been definitely stated, even as late as 3rd March, 1962, at the Supporter's Club Dinner, that it is the desire of the Board to retain all our young players, developed through the Youth Policy.

Most of these lads are local boys. It has been their ambition, ever since they were members of their Junior School team, to play for Swindon Town F.C. They have been

nurtured in the way of our manner of play, they are steeped in the tradition of Swindon Town, its memories and famous players. They are *our* boys, this is *their* club. So away with all this talk, it is most unsettling for Supporters, the Board, and the Players.

Let us settle down to the task of making Swindon Town F.C. one of the outstanding clubs in the Football World.

FOR ALL YOUR ANGLING NEEDS
CONSULT

FRANK WOODWARD

Swindon's Fishing Tackle Specialist

25 HAVELOCK ST., SWINDON
PHONE 3879

WE ARE SPECIALISTS IN —
OUTSIDE CATERING AND LICENSED BARS
FOR WEDDINGS, FETES, SPORTS DAYS, etc.

THE MASONS ARMS HOTEL

31 HIGH STREET - SWINDON 3522

H. E. LANE

(REGENT STREET) LTD.

The Pork Sausage Specialists

117 Victoria Road, Swindon

Telephone: 22336

COMLEY'S

Modern Music Centre

26 HAVELOCK ST., SWINDON

RECORDS - MUSIC - INSTRUMENTS

Top Twenty "Pops" always in stock
and wide selection of Jazz and Classics

PERSONAL SUPERVISION

Phone 3874

FIXTURES AND RESULTS TO DATE

DIVISION III

1961

Aug. 19	Portsmouth	H	1-3
21	Coventry City	A	1-2
26	Crystal Palace	A	1-3
29	Coventry City	H	3-3
Sept. 2	Bournemouth	H	1-1
4	Queen's Park R.	A	1-6
9	Watford	A	0-2
16	Hull City	H	1-1
19	Barnsley	H	1-1
23	Northampton T.	A	2-1
27	Barnsley	A	2-6
30	Lincoln City	H	4-0
Oct. 3	Grimsby Town	H	0-0
7	Brentford	A	0-1
10	Grimsby Town	A	1-0
13	Reading	H	4-1
17	Queen's Park R.	H	0-0
21	Bristol City	A	3-5
28	Bradford	H	3-2
Nov. 4	(1) Kettering T.	H	2-2
8	Kettering T.	A	0-3
11	Shrewsbury Tn.	H	1-2
18	Peterborough U.	A	2-3
25	(2)		
Dec. 2	Newport County	A	2-2
9	Southend U.	H	0-0
16	Portsmouth	A	2-2
23	Crystal Palace	H	5-0
26	Halifax Town	A	P

1962

Jan. 6	(3) Notts County	A	P
13	Bournemouth	A	0-0
20	Watford	H	3-1
27	(4) Port Vale	H	P
Feb. 3	Hull City	A	1-0
10	Northampton T.	H	2-2
17	(5) Lincoln City	A	2-2
23	Brentford	H	5-2
Mar. 2	Reading	A	1-1
10	(6) Bristol City	H	
17	Bradford	A	
23	Notts County	H	
31	(S.F.) Shrewsbury	A	
Apr. 7	Peterborough U.	H	
14	Port Vale	A	
16	Halifax Tn.	H	
20	Torquay Utd.	H	
21	Newport County	H	
23	Torquay Utd.	A	
28	Southend Utd.	A	

May 5 (Final)

FOOTBALL COMBINATION

1961

Aug. 22	Leyton Orient	H	0-0
Sept. 6	Southend Utd.	A	1-3
13	Portsmouth	A	1-7
20	Bournemouth	A	0-3
26	Birmingham	H	1-1
Oct. 4	Aldershot	A	1-2
10	Watford	H	1-3
Nov. 1	Millwall	A	0-1
7	Fulham	H	1-4
14	Southampton	H	2-0
22	Coventry City	A	2-1
29	Reading	A	1-3
Dec. 5	Brighton	H	4-2
12	Brentford	A	3-1
19	Charlton	H	P

1962

Jan. 3	Chelsea	A	P
9	Chelsea	H	0-0
17	Leyton Orient	A	1-2
23	Portsmouth	H	2-0
31	Birmingham City	A	1-1
Feb. 6	Bournemouth	H	3-2
13	Watford	A	1-3
20	Aldershot	H	5-0
26	Queen's Park R.	A	P
Mar. 6	Millwall	H	3-1
14	Fulham	A	
20	Southend Utd.	H	
28	Southampton	A	
Apr. 3	Coventry City	H	
10	Reading	H	
17	Brighton	A	
23	Brentford	H	
May 2	Charlton	A	
To be arranged	Q.P.R.	H	

Our Visitors

It is always a pleasure to welcome to the County Ground our friends of Bristol City F.C. This year we are able to offer them our congratulations on their fine record to date and we wish them luck in their promotion bid. We are sure they will understand when we say that we hope their success will come without the points from today's game as we hope to gain those.

Details of today's probable team are as follows:—

Cook, Anthony (Goalkeeper)

Local product, first signed for the club in 1949 and is now the senior professional. Regular 'keeper for past three seasons, having made debut in the League side in Nov. 1952. Made nearly 300 1st team appearances.

Briggs, Alec M. (Right Back)

Born Sheffield, signed pro. forms in April 1957 after one season with Colts XI. Made 4 Second Division appearances in his first season. Is now engaged on part-time basis.

Etheridge, Robert J. (Right Half)

Originally inside-left, secured from Gloucester City in September 1956. Made 167 1st team appearances and scored 30 goals to end of last season. Converted to half-back latter end 1959/60.

Connor, John F. (Centre-half)

Born Maryport, Cumberland, secured from Huddersfield Town in Oct. 1960, with whom he first signed in Oct. 1952. Can also play wing-half and centre-forward.

Casey, Thomas (Left Half)

Native of Culmer, Co. Down, has previous experience with Portsmouth, Newcastle Utd. (4 seasons), and Bournemouth & Boscombe. Joined Bristol City March 1959.

Capped six times for Ireland and played in last World Cup series.

Atyeo, John (Inside Right)

Born Dilton, Westbury, was on Portsmouth's books as an amateur before signing for Bristol City in June 1951. Capped against Brazil, Sweden, Spain, Eire and Denmark. Leading goal-scorer over a number of seasons, has made 206 Third Division (92 goals) and 200 Second Division (115 goals) appearances prior to this season. In all matches, 464 League, F.A. Cup, F.L. Cup, and Club representative games and scored 248 goals to end of Season 1960/61. Was recently granted second benefit.

Tait, Alex (Centre Forward)

Born Bedlington, Northumberland. Joined Newcastle United as amateur and remained with them until transfer secured in July 1960, playing last 6 seasons as part-time professional.

Williams, Robert G. (Inside Left)

Ex-Bristol Schoolboy player. Born Bristol, product of City Junior sides, joined ground-staff straight from school and signed as professional May 1958. Made 1st team debut 1959/60 and made 45 League appearances and scored 12 goals in two seasons.

Derrick, Jantzen (Outside Left)

Bristol-born. Member of Bristol Boys' English Schools' Trophy winning team 1957/58. Played in 2nd Division football 6 weeks prior to 17th birthday. Took part in F.A. Youth trial. Made 46 League and Cup appearances to end of 1960/61 season.

Peters, Roger D. (Outside Right)

Born Cheltenham, joined Club straight from school and was signed apprentice pro. August 1960, signing as professional on 17th birthday, March 1961. Made 1st team debut last match 1960/61 season.

C. Dunn & Son

BUILDERS & DECORATORS

Alterations, Renovations, Conversions
Plumbers and Sanitary Engineers
503 CRICKLADE ROAD Tel. 22522

NOTTON'S CAFE

COUNTY ROAD

200 yards from Ground
RIGHT ON THE BALL

FOR PAINTS OF GOOD QUALITY
H. S. HODGES & SONS
(SWINDON) LTD.

CRICKLADE ROAD - SWINDON
PHONE 22422

Dulux, Brolac, Friary, Valspar, Wallcharm, etc.

Harold Fleming

24 REGENT CIRCUS - SWINDON
Phone 22813



FOR ALL SPORTS EQUIPMENT
Also, Scout, Guide, Cub and Brownie Wear

AT THE COUNTY GROUND

SATURDAY, MARCH 17th

INTERNATIONAL YOUTH MATCH

ENGLAND v. WALES

Kick-off 3 p.m.

Usual Div. 3 prices. Tickets for Stand Seats are now on sale

GODDARD & Co.

Wholesale and Retail

WINE - SPIRIT - BEER
AND CIDER MERCHANTS

•
9 REGENT STREET, SWINDON
Telephone 22415

•
Also at
4 WINGATE PARADE, SWINDON

We are your **Main Distributors** for
VAUXHALL and **JAGUAR** cars
BEDFORD Vans and Trucks, etc.

Any make of Car or Truck
supplied - Used Vehicles a
specialised part of our
business.

•
SKURRAY'S
SWINDON

Telephone: 22266

H. HIBBERD LTD.

Plant Hire Contractors

TRACTORS and SCRAPERS
BULLDOZERS
DOTT SHOVELS
DIGGERS
ROAD ROLLERS

40 NEWPORT STREET, SWINDON

Telephone 6125

Swindon Bacon Curing Co. Ltd.

*Specialists in
Bacon, Pork & Cooked Ham*

50 FLEET STREET
SWINDON

Telephone: 22122

WARNES (Swindon) Ltd.

Electrical Contractors
Radio and Television

Contractors to:
SWINDON TOWN FOOTBALL CLUB
51/52 COMMERCIAL RD., SWINDON
'Phone 6346/7
160 COUNTY RD., SWINDON
'Phone 6346/7
9 SWINDON ST., HIGHWORTH
'Phone 379
7 CLIVE PARADE, SWINDON
'Phone 6346/7

DAY RETURN TICKETS

On Weekdays and Sundays (services permitting), available in each direction by any train the same day. From Swindon Junction to:-

	2nd Class
Bath Spa	7/6d.
Bristol (T.M.)	9/0d.
Weston-super-Mare	11/6d.

Other fares available. Ask for pamphlet B7/411, giving full information.

BRITISH RAILWAYS

Western Region

W. B. CARTER

Newsagent, Tobacconist and Confectioner
Large selection of Boxes of Chocolates
always in stock

CORONA, TIZER, DRINKS, etc.

Agents for Wall's Ice Cream

188/190 FERNDAL RD., SWINDON

Telephone: 3089

MILLS & MER

H
O
U
S
E
F
U
R
N
I
S
H
E
R
S

SWINDON TOWN v. BRISTOL CITY

SWINDON TO

RIGHT WING

Colours: RED SHIRTS, W

O'Hara

Wollen (2)

Smart (4)

Owen (5)

Summerbee (7) Hunt (8) Smith (9)

Referee—

Mr. E. T. Jennings
(Stourbridge)



Peters (11) Williams, R. (10) Tait (9)

Casey (6) Connor (5)

Briggs (3)

Cook

BRISTOL CITY

LEFT WING

These teams are subject to

16-17 BRIDGE ST, S

ENGLAND'S QUALITY
SERVICE

Your Car washed in under

THE INSTANT C

6/- ANY MAKE — 4

Local Stations

MARLBOROUGH ROAD
SWINDON

QUEENS ROAD
READING

Make your goal . .

M'CILROY'S RESTAURANT

Top of the Catering League
COFFEE - LUNCHES - TEAS
Parties catered for.
Regent Street, Swindon. Tel. 5294

THE PLESSEY COMPANY Ltd.

After years of achievement have great expansion plans for the future.

TECHNICAL STAFF
CLERICAL STAFF
MANUAL WORKERS

are essential for this progress.

Interested persons please apply to the Personnel Department.

ERRICKS LTD.

CITY Kick-off 3.0 p.m.
DON TOWN
SHIRTS, WHITE SHORTS LEFT WING
O'Hara

Trollope (3)
ren (5) Woodruff (6)
mith (9) Atkins (10) Weaver (11)



Linesmen —

Red Flag —

Mr. I. P. Jones
(Treharris)

Yellow Flag —

Mr. P. Pike
(Solihull)

Tait (9) Atyeo (8) Derrick (7)
nnor (5) Etheridge (4)
Ford (2)

Cook

TOL CITY

subject to alteration

RIGHT WING

U
P
H
O
L
S
T
E
R
E
R
S
•
R
E
M
O
V
A
L
S

T. SWINDON

PHONE
5365

LITY CAR WASHING RVICE

in under 5 minutes by

NT CAR WASH

E — 4 WASHES £1

I Stations:

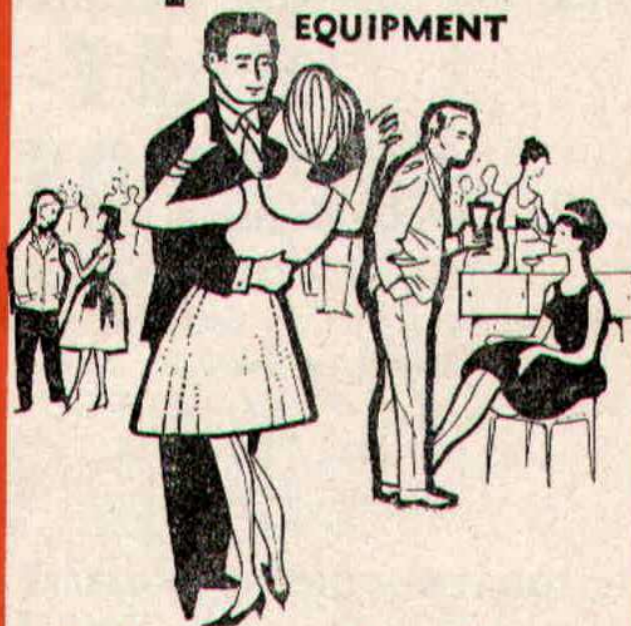
ENS ROAD
EADING

QUEENS ROAD
BRISTOL

INSIST ON

Garrard

EQUIPMENT



For Superb Tape and Record Playing



Fitted by the World's leading
manufacturers.

WILSONS (SWINDON) LTD.

BUILDERS OF
MODERN ATTRACTIVE HOUSES
AND BUNGALOWS

All enquiries to Head Office

90 COMMERCIAL ROAD
SWINDON 6361-3

ONE QUALITY ONLY—THE BEST!
FRESH SUPPLIES DAILY

York Road Fisheries SWINDON

WET, DRY or FRIED Tel.: 3680

Rent your T.V. - Washing Machines
Spin Dryers - Electrical Installations
from

D. V. HOLLAMBY LTD.

138 High St., Wootton Bassett, Wilts.
Telephone 295

ALL LEADING MAKES IN STOCK

DEMPSTER ENTERPRISES, offer a
modern fleet of 4 and 6 seater self-
drive hire cars, for your pleasure and
convenience. For advance bookings
apply:-

Dempster Enterprises

38 VICTORIA ROAD, SWINDON

Tel. 6460

Howard Autos, Swindon's Main Cotton
Motor Cycle distributors always have a
good selection of guaranteed used cars
for you to choose from.

HOWARD AUTOS

134/5 MANCHESTER ROAD

Tel. 6603

and at 3 WELLINGTON STREET, SWINDON

Have you purchased your ticket for the

HALF-TIME JACKPOT DRAW

TICKETS 6d. EACH on sale on the Ground
FOUR PRIZES

Result of Draw on Friday, 23rd February, 1962

1st Prize—£25-6-0. Ticket No. 12371

2nd Prize—£18-19-0. Ticket No. 12353

3rd Prize—£12-12-0. Ticket No. 10834

4th Prize—£6-6-0. Ticket No. 9393

TODAY'S WINNING NUMBERS WILL BE ANNOUNCED AT
HALF-TIME.

'BAILEY'S'

2 Cheney Manor Road - Swindon

NEWSAGENT :: TOBACCONIST
CONFECTIONER

Personal Attention and Satisfaction
always assured.

MEET YOUR FRIENDS FOR AN
ENJOYABLE EVENING AT

THE KINGSDOWN INN

(Host A. W. Vann)

FULLY LICENSED - ARKELL'S BEERS
SNACKS, Etc.

Stratton St. Margaret Tel. 3283

A. WHEELER & SON

330 CRICKLADE ROAD

PHONE 22095

FOR QUALITY COALS
AND PROMPT SERVICE

Lowest Terms for Self Drive Cars

Free Deliveries - Glasses loaned free
for your Wines, Spirits and Beers

115 CRICKLADE ROAD

"The Corner Off Licence"

Ring 4711 or call at

Supporters' Club Notes

We have mentioned previously in these columns that we frequently see newspapers from the West Country. One recently contained an interesting report of a Sports Forum, held in Cornwall, during the course of which a questioner asked on what occasion a Football League player was permitted to stand closer than the prescribed distance when an opposing player was taking a free kick.

The occasion proved to be a match played by Swindon Town, and the circumstances were that Harold Fleming placed his finger on the ball to keep it "dead", to allow an opposing player to take the kick during a gale. The referee apparently is reported to have said afterwards that Fleming was assisting his opponent and not hindering or obstructing him, and consequently he had no hesitation in allowing play to proceed.

We thought that older supporters might be interested to recall this incident.

For many of us who find it impossible to attend the County Ground for evening matches, it will be a welcome change to see a match, after wondering for several weeks how to pass the time on Saturday afternoons.

On behalf of a large number of supporters we would respectfully ask the Board to consider ways and means of playing the Combination matches on Saturday afternoons next season.

We were requested by a large section of our members to raise this point earlier, but our notes on that occasion were lost in the post, before reaching the County Ground; we hope for better luck on this occasion, and feel confident that the Board will give sympathetic consideration to our approach.

KEY OF THE BOARD

Half-time scores will be given in two sections. First Section indicated by **[1]**. Second Section indicated by **[2]**.

FIRST SECTION

- A—Fulham v. Blackburn
- B—Preston N.E. v. Manchester U.
- C—Sheffield U. v. Burnley
- D—Tottenham H. v. Aston Villa
- E—Blackpool v. Leicester C.
- F—Nottingham F. v. Manchester C.
- G—Wolverhampton W. v. Bolton
- H—Bristol R. v. Huddersfield
- I—Bury v. Middlesbrough
- J—Charlton v. Walsall
- K—Leeds v. Swansea
- L—Liverpool v. Derby
- M—Norwich v. Southampton
- N—Bournemouth v. Newport
- O—Crystal P. v. Reading
- P—Halifax v. Bradford
- Q—Hull v. Notts C.
- R—Lincoln v. Peterborough
- S—Northampton v. Shrewsbury
- T—Portsmouth v. Brentford

SECOND SECTION

- A—Torquay v. Port Vale
- B—Bradford C. v. Mansfield
- C—Carlisle v. Millwall
- D—Doncaster v. Hartlepoons
- E—Oldham v. Crewe
- F—Southport v. Workington

The Rendezvous of all Sportsmen . . .

THE CROWN INN

(Host: Frank Plyer)

Arkell's Best Ales : Fully Licensed
Snacks, etc.

STRATTON ST. MARGARET Tel. 2339

SUPPORT YOUR HOME

CIVIL DEFENCE

Plays a vital part in saving lives

Particulars:

CIVIC OFFICES - SWINDON

WIN OR LOSE !

THE FOOD IN THE

China Restaurant IS BEST

* * *

107 COMMERCIAL ROAD

SWINDON 6888

Open Daily 12 noon - 11.30 p.m.

For all Chinese and English Dishes

TOC H HOSPITAL BROADCAST SERVICE

It is of interest to note that on October 3rd, 1953, the Town were playing Bristol City, and on that memorable occasion, the late Harold Fleming made the inaugural appeal on behalf of the above service, an appeal which enabled Swindon to join the few towns then making live broadcasts to local hospitals.

The collection was a record one for the Ground and realised over £100, and in November, 1953, the first match was broadcast to the Isolation Hospital. Since then extensions have been made to Elm Court, Victoria and Stratton St. Margaret Hospitals. The cost per year has now risen to about £50 and now owing to the latest "squeeze" the G.P.O. rental charges have increased considerably. To enable us to maintain (and extend to the Princess Margaret Hospital) our services please support us on this Bristol City game and make it another bumper collection.

COATE GARAGE



REPAIRS
SERVICING
TYRES

★

OVERHAULS
REBORING
WELDING

Props.: E. V. & W. H. Mattick

MARLBOROUGH ROAD, SWINDON

For something a little different, try

DON JONES

HIGH CLASS CONFECTIONER
AND TOBACCONIST

Always a good selection of
SUCHARDS' - TOBLER
TERRY'S

Quality Chocolates and Presentation
Boxes

112 COMMERCIAL ROAD

6012

SWINDON

6012

Typewriters from £10

FULLY GUARANTEED

**DOBELL SHEARMAN
& CO. LTD.**

26 HIGH ST. & 33 FARINGDON RD.,
SWINDON Telephone 4961

Only 800 yards to your Dream Car—

NEW ALPHA MOTOR Co.
(SWINDON) LTD.

QUEENS DRIVE, SWINDON

Tel. 5062/63

FOR TOP QUALITY USED CARS

Open 7 days per week from 7 a.m. to 10.30 p.m.
Servicing for all makes of cars

DIVISION III

	P.	W.	D.	L.	F.	A.	Pts.
Portsmouth	33	21	8	4	61	31	50
Bournemouth	34	15	14	5	57	35	44
Bristol City	35	19	5	11	74	48	43
Grimsby Town	34	19	5	10	52	44	43
Peterborough United	33	17	5	11	77	65	39
Reading	33	17	5	11	59	52	39
Watford	35	14	10	11	56	55	38
Queen's Park Rangers	32	15	7	10	75	55	37
Northampton Town	34	14	8	12	65	43	36
Crystal Palace	34	14	8	12	72	61	36
Coventry City	32	12	9	11	49	50	33
Port Vale	32	12	7	13	44	41	31
Swindon Town	32	9	13	10	55	55	31
Notts County	31	12	7	12	51	53	31
Southend United	35	9	13	13	44	52	31
Halifax Town	29	12	6	11	45	47	30
Bradford	30	13	4	13	53	56	30
Hull City	32	11	7	14	42	41	29
Barnsley	33	9	9	15	56	70	27
Shrewsbury Town	34	9	9	16	55	67	27
Lincoln City	33	7	12	14	43	58	26
Torquay United	34	10	4	20	57	82	24
Brentford	33	9	5	19	35	68	23
Newport County	33	4	4	25	32	79	12

Chappell's Funeral Service

(Fun. Dir.: A. A. Winchcombe)

**196 COUNTY ROAD
SWINDON**

24 hour Service Tel. 6073

Your local "TEAM" for RENAULT
Sales and Service

CORONATION CAR SALES

67/68 VICTORIA ROAD

Telephone 4964

**SEA VIEW HOLIDAY
CAMP**

YOUR HOST — Mr. BENNETT

WYKE REGIS - WEYMOUTH
Dorset

"COAL!"
"COAL!"
"COAL!"

J. WILMER

ST. MARGARET'S ROAD, SWINDON

Telephone 22535

MEET YOUR FRIENDS AT THE

Southbrook Inn

(Hosts: Mr. and Mrs. Jack Scutts)

FULLY LICENSED
CLINCH BEERS, ETC.

SOUTHBROOK STREET, SWINDON
Tel.: 5837

STOP!

LOOK!

NU-HOMES

For all Household Fitments

Paints - Emulsions - Wallpapers
Kitchen Units and Bathroom Suites,
etc.

176a Manchester Road
TELEPHONE 22178

FORTHCOMING MATCH . . .

FOOTBALL COMBINATION

SWINDON TN. v. SOUTHEND

TUESDAY, 20th MARCH, 1962

Kick-off 7.30 p.m.

**BRITANNIA
MOTORS**

Proprietors: A. GODWIN

205-206 RODBOURNE ROAD
SWINDON PHONE 5303

- **TYRES**
NEW AND REMOULD
CASH OR EASY PAYMENTS
- **ACCESSORIES**
- **QUICK SERVICE AND REPAIRS**
AT SWINDON'S MOST MODERN
LUBRICATION BAY AND
WORKSHOP

*For High Class
Central Heating, Plumbing
Painting and Decorating
Electrical Installations
and Repairs*

•
NORTH WILTS

Sanitary & Heating
Co. Ltd.

NEWPORT ST., SWINDON

'Phone: 5373/4

Always at your service

L. BIBBY

For all Types, Rags, Iron and Metal,
etc. Spot Cash Paid. Please Telephone
2101 and our van will call.

THE PADDOCK, ERMIN STREET
STRATTON ST. MARGARET

Walcot Greengrocer

G. E. STAMMERS

at

**1 SUSSEX SQUARE
SWINDON**

SWINDON **22526**

*CAN ALSO BE YOUR LUCKY NUMBER ! ! !
if you ring*

HOLMES & LUCAS

14A REGENT STREET :: SWINDON

for all your

TELEVISION, RADIO AND ELECTRICAL REQUIREMENTS

LUCKY PROGRAMME

Please retain your programme. An announcement will be made at half-time of two numbers and the holders will be given a stand seat at the next Division III game. The persons who purchased the programmes bearing the winning numbers should call at the office after the game and claim their seats.

4549

FRIED FISH AND CHIPS

Always Fresh - Always Hot

WALCOT FISHERIES
Sussex Square

Wet fish and frozen foods all refrigerated display.

Telephone Swindon 22731

6 REGENT CIRCUS (NEAR G.P.O.)

Main Booking Agents for Millers Coaches
Agents for Wessex School of Motoring
Newsagents & Tobacconists & Confectioners
A. J. D. WOODHOUSE & A. SMITH

HATTON'S NEWSAGENCY

For Insurance or Hire Purchase
CARS - CARAVANS - MOTOR CYCLES, etc.
Consult

D. & H. HENTY LTD.
54 COMMERCIAL RD., SWINDON
SWINDON 5258

PANKHURST
The Palace, Gorse Hill,
Swindon

MOTOR CYCLE - SCOOTER AND
THREE-WHEELER SPECIALISTS

Open Mon. to Sat. 9 a.m. - 8 p.m. Phone 5466

MORGAN'S IRONMONGERS
C.A.S.M.S. (Swindon) Ltd.

2 SUSSEX SQUARE, WALCOT, SWINDON
also at 163 RODBOURNE ROAD Tel. 22516
Paraffin services to all areas town and country
Everything for the home
Precision Tools for Engineering Trade,
Tools for all trades

Maylott Studios

For GROUP & SPORT Photographs
OFFICIAL PHOTOGRAPHER TO
SWINDON TOWN FOOTBALL CLUB

31 FARINGDON RD. Tel. 22792